

# Create an instant shutdown and/or restart icon on your desktop.

You will need to use the windows program shutdown.exe (which is normally located in C:\Windows\System32\) and its parameters.

The table below is a shortened list of the parameters needed for instant shutdown and/or restart plus the help parameter to display all the parameters defined within your windows system.

Parameter	Description
/s	Shuts down the computer.
/r	Restarts the computer after shutdown.
/t <sec>	Sets the time-out period or delay to sec (seconds) before a restart or shutdown. This causes a warning to display on the local console. You can specify 0-600 seconds. If you do not use /t, the time-out period is 30 seconds by default.
/?	Displays help at the command prompt, including a list of the major and minor reasons that are defined on your local computer.

This is what the instant shutdown command line would look like:

```
C:\Windows\System32\shutdown.exe /s /t 0
```

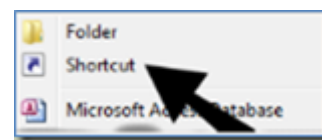
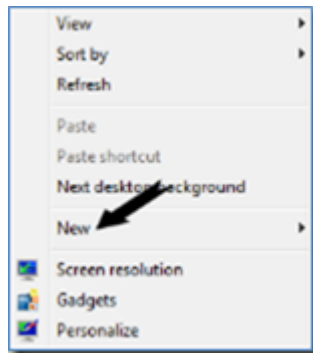
And the instant reboot command line would look like this:

```
C:\Windows\System32\shutdown.exe /r /t 0
```

As you can see the only difference is the use of “/s” or “/r” parameter

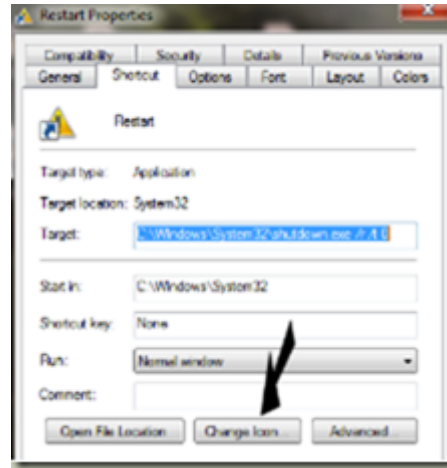
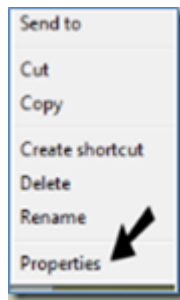
Now that we know what to use, how do we get it onto the desktop?

Easy! By creating a desktop shortcut icon containing the shutdown/restart command line as follows.



1. Right click anywhere on an empty space on your desktop to open a menu where you can find **“New”**.
2. Hover over **“New”** and another menu appear, near the top of this is **“Shortcut”**
3. Select/Click on **“Shortcut”** to open the Shortcut creation wizard.
4. Enter your command line and parameters
5. Click Next
6. Type a title/name for this shortcut – e.g. **“Shutdown”**
7. And click Finish

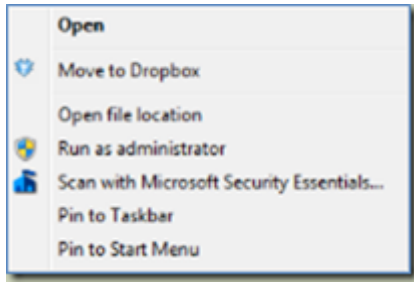
I like to have a pretty self-explanatory icon's because it's easier to find than reading the titles – and here is how to do this:



1. Right click on the Shutdown icon, to open a menu
2. Select and click on “**Properties**” to open the “Shutdown Properties” window
3. It should automatically open in the “Shortcut” tab where you will find – near the bottom – the Change Icon... button.
4. Click the Change Icon... and another window with lots of icons opens.
5. Scroll through these until you find an icon you like.
6. Click on it; followed by clicking the OK button to close that window.
7. Now all you have to do is click the OK button in the “Properties” window and that’s it.

One last thing:

You might also want place Shutdown icon on your “Taskbar” and/or your “Start menu” this action is called “Pin to ...” – and here is how to do this:



1. Right click on the Shutdown icon (as before), to open a menu
2. This time you are looking for “**Pin to Taskbar**” or “**Pin to Start Menu**” (near the top)
3. Just click either and that’s it.

**Note** you don’t lose the original shortcut.

To unpin an icon from the taskbar/start menu, just right click on it and click “Unpin this program from Taskbar” or “Unpin from Start Menu” and they are gone; not uninstalled nor deleted because what you unpinned was a shortcut and NOT the actual item.